

Connection Is Everything

2024 Community Health Snapshot
SOUTHERN CALIFORNIA



A message from our leader

Kaiser Permanente's mission to improve the health of our members and communities includes providing high-quality health care and coverage and partnering with communities to address the biggest factors that shape people's health.

Throughout 2024, we invested \$1.2 billion in a broad range of programs and charitable initiatives designed to meet the needs of the communities and members we serve in Southern California. Our partnerships focused on reducing homelessness, improving health care access, supporting mental health and resilience in schools, increasing access to nutritious food, and collaborating with public health departments.

In 2024, we increased participation in Medi-Cal, provided charitable care and coverage, and partnered with community clinics to help them increase their service capabilities.

We advanced education opportunities and pathways for health professionals, expanded the health care workforce, and promoted clinical research.

We also advanced our commitment to building healthier communities with the opening of the new Watts Medical Offices and the rebuilt Watts Counseling and Learning Center.

Through this Community Health Snapshot, we hope to highlight our dedication to improving community health and express gratitude to our numerous partners.

John Yamamoto

Vice President, Community Health and Government Relations

Kaiser Permanente in Southern California



2024 by the numbers

Southern California community health investment by program

\$700 million
Medi-Cal and other
government programs

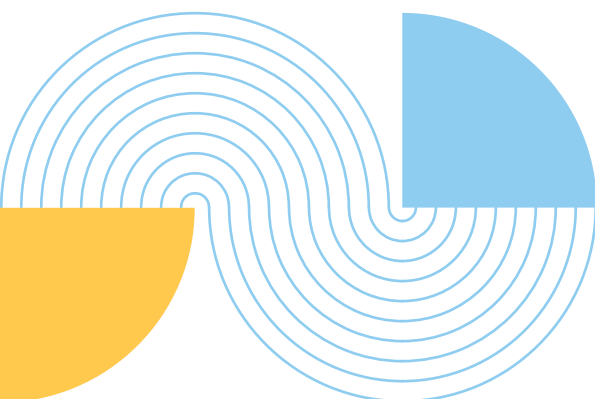
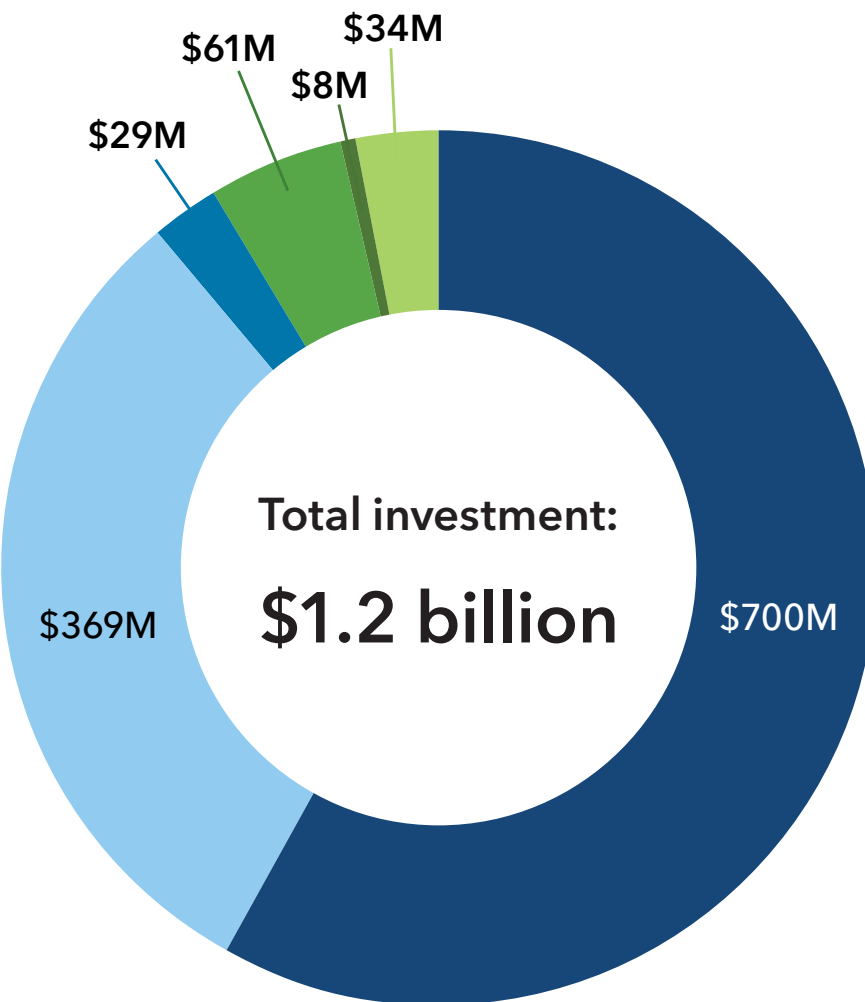
\$369 million
Charitable coverage
and care

\$29 million
Grants and donations

\$61 million
Health professions
education

\$8 million
Research

\$34 million
Other



Housing for health

Housing insecurity is a leading risk factor for poor health. [More than half a million](#) people in the U.S. don't have homes, and there isn't enough affordable housing for those who need it.

For people without housing, it's harder to take care of basic health and medical needs. And it's even harder to recover from illnesses and injuries.

Medical-legal partnership

Kaiser Permanente offers a lifeline for members who experience housing insecurity. Our Medical-Legal Partnership Initiative connects members to no-cost legal assistance.

By addressing social needs, like safe housing, we can improve overall patient well-being. By preventing evictions and connecting community residents with legal services, this initiative helps members maintain access to stable housing, contributing to better health.

To administer this program, our Los Angeles Medical Center Social Medicine team collaborates with Neighborhood Legal Services of Los Angeles County to support members in Los Angeles, Glendale, and Pasadena.

New lease on life

Isabela Tevanyan faced a significant rent increase while undergoing lung cancer treatment. She feared she'd end up living in her car because of the unaffordable rent.

During a visit to the Kaiser Permanente Los Angeles Medical Center, Tevanyan met with a social worker who referred her for legal assistance. The referral came thanks to our medical-legal partnership program, which provides people with no-cost legal assistance.

Through the program, supervising attorney Elisa Carino challenged the rent hike and successfully reversed the increase. As a result, Tevanyan remained in her home, where she had lived for over 10 years.

“ My attorney helped me know my rights, preventing homelessness. Kaiser Permanente's support was invaluable. ”

– Isabela Tevanyan, member, Kaiser Permanente



Access to care

Supporting health coverage enrollment

Kaiser Permanente supported 25 organizations that specialize in health plan enrollment across Southern California. These organizations expand access to care to individuals and families who cannot afford health coverage.

For example, the Mixteco Indigena Community Organizing Project was able to reach out to Indigenous farmworkers and others who needed language-appropriate assistance to successfully enroll in health coverage.

From November 1, 2024, through January 31, 2025, trained health navigators fluent in Indigenous languages like Mixteco and Zapoteco, as well as Spanish and English, assisted residents with open enrollment for Medi-Cal, Covered California, and Kaiser Permanente's Community Health Coverage Program.

Our partners like MICOP successfully enrolled 1,233 California residents into Kaiser Permanente's Community Health Coverage Program. This program subsidized monthly premiums and eliminated copays and out-of-pocket costs for most care at Kaiser Permanente facilities.

BY THE NUMBERS

1,233

Southern California residents enrolled in our Community Health Care Program

2,511

California residents enrolled in our Community Health Care Program

“Health care is limited, especially for Indigenous people, who are vital to California's agriculture industry.”

– Arcenio Lopez, Executive Director, MICOP



Access to care

Supporting families, building futures

The Kaiser Permanente Watts Counseling and Learning Center's motto is "Helping People Grow." Since 1967, the center has been a valuable community resource for families in South Los Angeles. The center offers mental health and counseling services, educational support for children with learning disabilities, and a nationally accredited preschool program.

In February 2024, the center expanded its services and moved into a shared campus with the new Kaiser Permanente Watts Medical Offices. This expansion aims to address health disparities and service gaps for Watts and nearby communities.

The center operates several outreach programs, including "Kids Can Cope" support groups for children whose siblings or parents have cancer. It also provides education scholarships, preemployment training for teens, and training opportunities for graduate behavioral health interns.

Being a Kaiser Permanente member is not required to receive services. And services are available in English and Spanish.

BY THE NUMBERS

In 2024, Watts Medical
Offices provided:

3,109
flu shots

1,102
mammograms

2,067
X-rays

33,000+
appointments to support primary care,
ob-gyn, pediatrics, population care
management, psychiatry, and social services



“ Since 1965, the Kaiser Permanente Watts Counseling and Learning Center has supported generations of families. With its expansion, Kaiser Permanente deepens our long-standing commitment to the health, education, and well-being of families in the Watts and South Los Angeles communities. ”

– Maria T. Aguirre, Senior Director, Kaiser Permanente Watts Counseling and Learning Center

Public health


Americans spend 90% of their lifetime less than 20 miles from home, in their communities. But not every American lives in or spends time in a healthy community.

Kaiser Permanente in Southern California invested \$10 million in the Blue Zones initiative at Riverside University Health System – Public Health. This 5-year strategic project seeks to engage people, improve places, and change policies to make it easier to live longer, healthier lives.

This investment will engage residents, businesses, community-based organizations, governments, and others to support community health transformation in 5 Southern California communities: Riverside, Banning, Palm Springs, Coachella, and Mead Valley.

What are Blue Zones?

Blue Zones are communities where people have enjoyed extraordinarily long, healthy lives. The people in these communities share common characteristics, like regular physical activity, a plant-heavy diet, and strong social connections.



“Kaiser Permanente believes that partnering with public health departments and communities actively participating in their health can improve health outcomes.”

– Sammy Totah, Senior Vice President and Area Manager,
Kaiser Permanente in Riverside



Economic opportunity

Kaiser Permanente is partnering with the South Los Angeles community to boost opportunities for critical health care careers. Our South Los Angeles high-impact hiring initiative provides resources for individuals pursuing health care careers.

Yaritza Juarez Medina is a program graduate who is now thriving in her new career as a licensed vocational nurse at Kaiser Permanente Los Angeles Medical Center. During her schooling, Kaiser Permanente provided job readiness training, job application assistance, mock interviews, and one-on-one support from talent specialists.

The high-impact hiring program in South Los Angeles is just one of many ways that Kaiser Permanente supports education and access to health care careers. Other examples include summer youth employment, mid-career training, and education and tuition support for current employees.

We also collaborate with organizations including the Asian American Drug Abuse Program, West Adams WorkSource Center, and the Maxine Waters Employment Preparation Center in Watts to ensure students have the best chance at completing their nursing training.

Since the partnership began, we have supported 37 students to receive training.



“ My family’s diabetes care needs inspired me to pursue a career in health care to make a positive impact. ”

– Yaritza Juarez Medina, Licensed Vocational Nurse,
Kaiser Permanente Los Angeles Medical Center

Thriving Schools


In collaboration with schools and school districts, our Thriving Schools initiative addresses the physical, social, and mental well-being of students, staff, and teachers.

In 2022, the Department of Behavioral and Mental Health at Colton Joint Unified School District noticed a significant increase in the number of referrals for students in need of mental health services.

With grant support from Kaiser Permanente, the school district was able to recruit and train behavioral and mental health interns to increase mental health services for students and families.

When schools support mental health, students typically have fewer disciplinary issues, can focus more on schoolwork, and can develop skills to communicate better.

These positive effects can translate to improved academic outcomes and health later in life.



“ Providing mental health services through our internship program in a school-based setting has helped us address barriers to learning and provide support so all students can achieve at school and ultimately in life. ”

– Antonio Castro, Licensed Clinical Social Worker, Director, Behavioral and Mental Health, Colton Joint Unified School District



BY THE NUMBERS

45

local education agencies supported

962

schools accessed Thriving Schools resources





Community Health Committee of the Boards of Directors

Ramón Baez
Regina Benjamin, MD, MBA

Jenny J. Ming
Richard P. Shannon, MD

Kaiser Permanente Leadership

Greg A. Adams
Chair and Chief Executive Officer
Kaiser Foundation Health Plan, Inc.
Kaiser Foundation Hospitals

Bechara Choucair, MD
Executive Vice President and
Chief Health Officer
Kaiser Foundation Health Plan, Inc.
Kaiser Foundation Hospitals

Community and Social Health National Leadership

Stephanie Ledesma
Senior Vice President

Anand Shah, MD
Vice President, Social Health

Regional Leadership

Michelle Gaskill-Hames
Regional President
Kaiser Permanente
Southern California and Hawaii

John Yamamoto
Vice President, Community Health
and Government Relations
Kaiser Permanente
Southern California