

# Kaiser Permanente Los Angeles County

## 2023 Community Health Snapshot

Our mission goes beyond providing exceptional health care services. We are committed to enhancing the well-being of our members and strengthening the communities we serve.

We believe that true health extends beyond medical care, encompassing physical, mental, social, and community aspects. Kaiser Permanente is tackling the underlying determinants of health, including economic opportunities, racial equity, education, homelessness, housing, food security, and building resilience in school environments, while ensuring access to health care.

To guide our investments toward achieving more equitable health outcomes in a meaningful and sustainable manner, we collaborate closely with community-based organizations, safety net clinics, schools, faith-based institutions, cities, service providers, county departments, and health care systems.

In addition to direct grant investments, we provide our partners with technical assistance, facilitate trainings, conduct community programming, provide volunteers, and engage in strategic community collaboratives. Together, we co-create solutions tailored to the specific needs of our communities.



## Building healthy communities

Kaiser Permanente is committed to Total Health — mind, body, and community.

### Our footprint in Los Angeles County

7 Medical centers (hospitals)

81 Medical office buildings

2,409,332 Members

5,556 Physicians

15,701 Nurses

26,973 Employees

In 2023, **\$222,552,775** was invested to improve community health among vulnerable populations. Strategic community investments are guided by the Kaiser Permanente tri-annual Community Health Needs Assessment ([kp.org/CHNA](https://kp.org/CHNA)).

### Population by age and race

- **10,326,557** total population:
- **13.8%** age 65+ years, **21.5%** under age 18 years
- **0.2%** Native Hawaiian/other Pacific Islander, **3.2%** multiracial, **15.1%** Asian, **7.5%** Black, **25.2%** White, **48%** Hispanic

### Why it matters

- **13.4%** are uninsured
- **20.5%** adults have no high school diploma
- **9%** of adults have depression while **12%** are at risk for major depression
- **34.8%** poverty rate, **28.6%** unemployment rate, **75,518** unhoused



## Expanding medical, social, and educational services

Kaiser Permanente opened the **Watts Medical Offices** and expanded the **Watts Counseling and Learning Center**, affirming its commitment to community health and equity in Southern California. The facility offers comprehensive medical, social, and educational services for 39,000 members. Through colocation, the Center enhances access to quality health care, counseling, education, and early childhood programs. Rooted in a legacy of service, the expansion aims to address health disparities and historical underinvestment in Watts and South Los Angeles. This investment reflects a dedication to improving community well-being and fostering a healthier, more equitable future for Watts.

**\$1.085 million**

to improve physical, mental, and social health for **13** school districts



**27,188**

students and adults reached through Educational Theatre

**\$79,686,408**

in medical financial assistance provided to

**45,584**

individuals



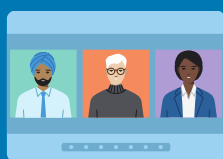
Quality health care delivered to

**269,213**

Medi-Cal patients

**\$1 million**

to **5** organizations for providing legal services to prevent evictions



**\$1.68 million**

to empower and support **27** community partners in promoting economic opportunities

**\$14.28 million**

to **14** community health centers and the Community Clinic Consortia of Los Angeles County to strengthen the Safety Net



Read more about our partnerships



Increasing access to quality care

**Onegeneration** fosters intergenerational connections and provides essential services to older adults, children, and families. Operating 3 senior centers, it offers programs catering to older adults, including recreational activities, cognitive games, and congregate meals. Its childcare and preschool program serves children aged 6 months to 6 years, ensuring comprehensive support across generations. Onegeneration delivers weekly hot meals to home-bound seniors aged 60 and above, addressing nutritional needs and enhancing well-being. Since 1998, Onegeneration receives Kaiser Permanente member referrals through the Kaiser Permanente Community Support Hub, further amplifying its impact on community health and wellness.



In alignment with its commitment to enhance access to quality health care services, Kaiser Permanente awarded a \$30,000 grant to **East Valley Community Health Center** to implement the VIDA Program in the San Gabriel Valley. This program has significantly improved the health and wellness of 120 clinic patients living with diabetes, fostering better health outcomes and hemoglobin A1c control.

Kaiser Permanente supports **LA County Department of Public Health's African American Infant Maternal Mortality (AAIMM)** Community Action Team with both physician leadership and grant funding. The collaborative's efforts bring together community-based organizations, health care organizations and residents of the Antelope Valley to work towards equitable health outcomes for Black mothers and babies. Through data sharing agreements and collaboration, Kaiser Permanente continues to champion initiatives aimed at improving maternal and infant health outcomes in the Antelope Valley.



## Improving mental health

Kaiser Permanente's focus on mental and behavioral health is evident in its \$25,000 grant to the **YWCA of San Gabriel Valley**. Through the Community Health Equity and Career Knowledge (C.H.E.C.K.) program, this initiative aims to enhance community knowledge around mental health and increase access to career opportunities through linkages to workforce readiness training and activities for teens and older adults in the San Gabriel Valley.

Kaiser Permanente's collaboration with **Neighborhood Youth Achievers (NYA)** in Watts signifies a holistic approach to community well-being. A \$75,000 grant supports after-school academic programs at 112th Street Elementary School, enhancing educational opportunities for under-resourced students. NYA provides safe activities, tutoring, and enriching field trips, addressing immediate educational needs. The partnership also pioneers mental health ambassador training for parents, empowering them to support mental well-being in the community. Through experiential learning and mental health initiatives, Kaiser Permanente invests strategically in Watts, fostering long-term health and educational outcomes for residents.



## Creating economic opportunity

The **Hippocrates Circle Program** seeks to diversify the future physician landscape by introducing 7th and 8th graders to the medical profession. 273 students from the Los Angeles Unified School District engaged with physicians who mirrored their backgrounds, explored a career in health care, fostered a connection, and completed the program.

The **Summer Youth Employment Program** offers meaningful health care employment to underserved students, providing educational sessions and workshops to introduce 170 high school students in Los Angeles County to health care careers.

Kaiser Permanente actively promotes diversity in health care careers. In partnership with **AADAP West Adams WorkSource Center** and **Maxine Waters Employment Preparation Center**, Kaiser Permanente supported students with \$340,000 in grants for the South LA LVN High Impact Hiring initiative. Additionally, our talent acquisition team facilitated job readiness workshops to help students apply for job openings. The program fosters pathways to success for students from underserved communities who want to build careers in health care.





## Addressing housing insecurity

Kaiser Permanente demonstrated its commitment to affordable housing initiatives by granting \$20,000 to LINC Housing in 2023.

**LINC Housing** is expanding its presence with a 91-unit development currently under construction and 4 properties in predevelopment. These housing units will serve seniors, people experiencing homelessness, and developmentally disabled households in the South Bay region. The grant also supports LINC Housing's Life Pathways initiative to help participants with workforce training, financial literacy, health and well-being services, and youth empowerment programs. By prioritizing individual empowerment and fostering community engagement, Life Pathways contributes to building a healthier, more resilient community, addressing critical needs such as housing, community health, and overall well-being.



**Los Angeles Room & Board** opened Opportunity House in December 2020 to assist homeless and housing insecure college students. The "Supporting Homeless Youth in Los Angeles" project provides housing, food, case management, career coaching, and other services to 94 at-risk youth. Residents can spend up to 2 years pursuing academic goals, securing employment, and ultimately transitioning into long-term housing. Kaiser Permanente's grant for \$24,000 supports these direct services and empowers clients to pursue academic and career success.

Kaiser Permanente has partnered with **Neighborhood Legal Services of Los Angeles County** to develop a Medical Legal Partnership (MLP) at the Kaiser Permanente Los Angeles Medical Center. Medical-legal partnerships are proven interventions that embed access to legal services within the health care delivery system. MLPs have been shown to improve medication adherence, reduce hospitalizations, and improve management of chronic disease. Through a combination of individual representation, high-impact litigation, and public policy advocacy, Neighborhood Legal Services of LA combats the immediate and long-lasting effects of poverty and expands access to health, opportunity, and justice in Los Angeles' diverse neighborhoods.



## Boosting food and nutrition security

**Project Angel Food** (PAF) received a \$180,000 grant from Kaiser Permanente to support medically tailored meal deliveries to 680 clients living with congestive heart failure (CHF). PAF's Medically Tailored Meals program includes the delivery of a minimum of one daily meal with 220,000 meals delivered in 2023. Meals are coupled with nutrition counselling designed to prevent clients from returning to a state of food insecurity and malnourishment, helping to alleviate the financial burdens of disease, and enhancing their health. Meals are customized to each client's co-morbidities, food preferences, and cultural food traditions.

Kaiser Permanente supported **TrueCare** and **People Assisting the Homeless** with \$100,000 in grant funding to address food insecurity by promoting food sovereignty and providing meals in interim and transitional housing projects.