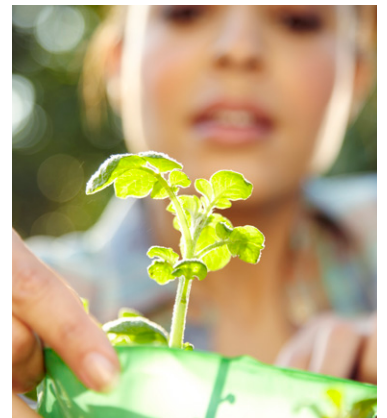


# Kaiser Permanente in Colorado 2023 Community Health Snapshot

The many ways we support community health.



# Our values and commitment

There is an established link between the health of communities and the health of the people who live in them. Unmet social health needs – such as access to safe and stable housing or an available supply of culturally relevant, healthy food – can lead to higher rates of physical and mental health conditions. These social determinants of health have been shown to have a greater influence on health than genetic factors, access to health care services, and even lifestyle choices, says the [Centers for Disease Control and Prevention](#).

That's why Kaiser Permanente extends our whole-person approach to care beyond the walls of our medical offices and into the communities we serve. Our whole-community approach to improving health and equity for everyone is part of our mission as a nonprofit organization and a leading provider of health care.

To help close social health gaps, we invested nearly \$100 million in community health support, partnerships, programs, and charitable care and coverage in 2023. An additional \$14 million was invested from our donor-advised fund with The Denver Foundation.

This Community Health Snapshot highlights some of that work – which wouldn't be possible without the many close connections we have with other community leaders and organizations. We are proud to work with them!



**Mike Ramseier**  
Regional President



**Jeff Krawcek, MD**  
President and Executive  
Medical Director



**Amy Whited**  
Vice President of Community  
Health, Marketing, and  
Communications

# Access to Care



At Kaiser Permanente, we believe that everyone has a right to good health. Ensuring access to care means serving those most in need through Medicaid, Medical Financial Assistance, charitable health coverage, and other forms of subsidized care and coverage.

## Charity care

Our Medical Financial Assistance program enabled 31,000 low-income, uninsured, and underinsured patients to access emergency and medically necessary care.



## Safety net

We're committed to building partnerships with institutions that serve on the front lines of health care for the uninsured and underserved, often referred to as the health care "safety net."

- Kaiser Permanente's [\\$10 million commitment](#) to Denver Health, Denver's core safety-net hospital, assisted with vital medical services for the community, including continued access to primary and specialty care. This grant and matching challenge sparked \$18.7 million for Denver Health's uncompensated care.
- The partnership between 8 Kaiser Permanente specialty care departments and 10 safety-net clinics has connected more than 4,580 Coloradans who were uninsured or enrolled in Medicaid to specialty-care services since 2013. We celebrated the 10-year anniversary of the [Safety Net Specialty Care program](#).



# Social Health



Social health is being able to take care of basic, daily needs: Having a safe place to live, nutritious food, and positive relationships.

Improving personal financial security and reducing inequities are also essential to living well. Some components of social health we focus on include housing, access to healthy foods, and economic opportunities.

## Housing for Health

Having a safe place to call home is critical to health and well-being. That's why we support a broad range of efforts and organizations to improve housing stability.

Our contributions\* to **RecoveryWorks, Ascending to Health Respite Care**, and the **Stout Street Recuperative Care Center** (operated by the Colorado Coalition for the Homeless) support safe places for the unhoused community to rest and recover following a hospital stay.

Medical respite programs are cost-effective and provide clinical care and other services to help stabilize lives.

To preserve existing affordable housing, we teamed up with **Enterprise Community Partners** to support a [Colorado Preservation Next Academy](#). A cohort of affordable housing developers, practitioners, and advocates received training and technical assistance on how to finance, acquire, and rehabilitate small-to medium-sized multifamily properties.

We contributed\* \$250,000 to **The City and County of Denver's metroDPA-Social Equity Program**, which supports metro Denver residents who live in certain areas and have faced housing discrimination.

The program provides eligible applicants with down payment assistance to help eliminate racial disparities and positively impact families for future generations.

## Food and Nutrition Security

We are helping communities address food and nutrition security by supporting nutritious food programs (e.g., SNAP and WIC) and building community-based organization partnerships. This approach serves as a model for evidence-based practices and provides opportunities to develop policy recommendations that can improve access to nutritious food.



Kaiser Permanente and **Project Angel Heart**, in partnership with the **Colorado Health Institute** and **Food Bank of the Rockies**, convened hundreds of researchers, policymakers, and representatives from community organizations at the first-ever Colorado **Food is Medicine Summit**. They discussed “Food is Medicine” programs for people who don’t have enough and/or who have a chronic illness.



Project Angel Heart expanded its medically tailored meals program into Northern Colorado with the help of a Kaiser Permanente grant, aiming to provide more than 2.4 million meals to 10,000 individuals by 2026.

Additionally, \$300,000 in grants\* supported **Benefits in Action’s** SNAP outreach and enrollment program in Colorado Springs and **Integrated Family Community Services’** “Shop the Shelves, No Cost Grocery Market,” which will provide over 70,000 under-resourced Coloradans with fresh food and hygiene items in 1 year.

## Economic Opportunity

Communities of color are disproportionately affected by a lack of economic opportunity. We recognize the connection between economic opportunities and health outcomes and work to bridge gaps within the communities we serve through our support of diverse business growth, financial health, and equitable career pathways.

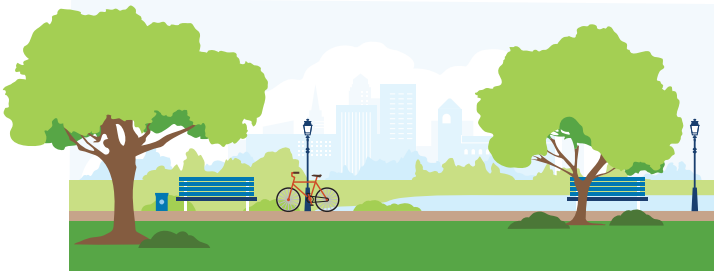
We contributed over [\\$4 million](#) to address the growing need for mental health care and mental health professionals. In partnership with the **National Council for Mental Health Wellbeing**, a National Mental Health Workforce Accelerator program was created to help expand the pipeline of qualified, experienced, and diverse mental health providers in Colorado communities. Our local partner, **Metropolitan State University of Denver**, works with provider organizations and academic partners to identify and support diverse individuals pursuing careers as licensed mental health professionals.

Our College Equity Scholarship program with **Denver Scholarship Foundation** supported nearly 20 diverse graduates from Denver Public Schools with need-based scholarships to pursue health care certificates or degrees at any of the 31 partner colleges in Colorado.





# Resilient Communities



Community resilience is about creating communities that can adapt to everyday challenges. We provide extra support when they need it most.

## Thriving Schools

As a valuable partner in health for school districts across Colorado, we're committed to ensuring that teachers, staff, and students have the support they need to thrive – in learning and in health.

RISE, the **Resilience in School Environments** initiative, prepares school staff to integrate social and emotional well-being into all aspects of school life, both theirs and their students. In 2023, we [awarded a new cohort of 10 school districts](#) a combined total of \$3 million over 3 years, to implement interventions that build a positive, healthy culture in their schools.

We contributed\* to the **Chef Ann Foundation** to support their Healthy School Food Pathway program. This program not only strives to improve the nutrition of meals in schools, but also provides opportunities for increased instruction and skill building for nutrition services staff, as well as career advancement opportunities, all resulting in higher job satisfaction and retention.



## CityHealth

Local policies addressing key social determinants of health can greatly impact people's lives. [CityHealth's 2023 Annual City Assessment awarded Denver](#) with an overall gold medal in recognition of its commitment to adopting policies that address critical health disparities and enhance residents' access to healthy options. [Aurora](#) and [Colorado Springs](#), new cities added to the program, received overall bronze medals.

## Environmental Stewardship

We believe it is our obligation as a health care provider to [minimize our environmental impact](#). This is reflected in how we invest in our communities, power our facilities, manage waste, and purchase food, medical supplies, and equipment.



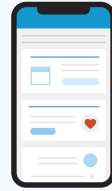
Kaiser Permanente in Colorado was inducted into the [Colorado Green Business Network](#), as a Gold Medal participant for our dedication to sustainability across multiple aspects of our operations, from using energy and water to promoting community health and climate resilience.

In partnership with the **Colorado Health Institute**, we released the [Advancing Climate Resilience for Community Health](#) report, which provides recommendations for health systems and philanthropic organizations to support, lead, and advance solutions to reduce the health impacts of climate change.

# Employee Community Engagement

We support staff engagement in community health through employee gift matching and volunteer opportunities.

Employees supported 247 local organizations with more than \$300,000 in donations through our annual Employee Giving Campaign and participated in nearly 1,300 hours of volunteerism.



Read more about our work at [about.kp.org](https://about.kp.org) and check out our [community resource directory](#).

